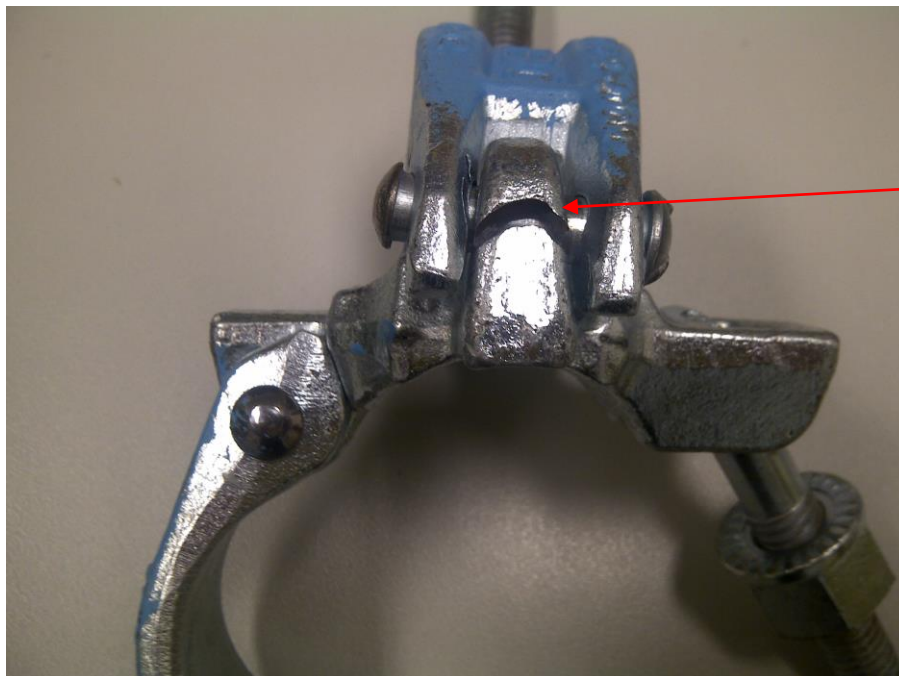


BACKGROUND:

Faulty scaffold clips have been discovered at a construction site in WA. The clips have been imported from India, TURBO brand.

The clips do not have a batch number embossed on the clips making identification of the faulty batch impossible. There have been reported problems in the past with this brand slipping under load. An investigation is currently in progress.



Fracture

RECOMMENDATIONS:

Ensure that all scaffold components manufactured by TURBO are thoroughly inspected before use and that the supplier is notified of any deformations or defects.

For further information contact Steve McCann:
Mob: 0488 102 297
Email: smccann@cfmeuwa.com

SAFETY ALERT